

COMUNE DI PELLEZZANO

PROVINCIA DI SALERNO

Piano di recupero dei centri storici
del Comune di Pellezzano

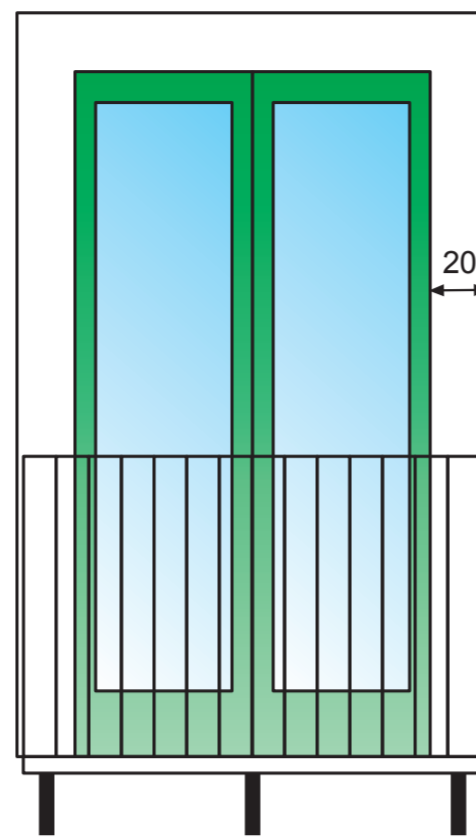
Progettista: arch. Giuseppe Braione

Elaborato

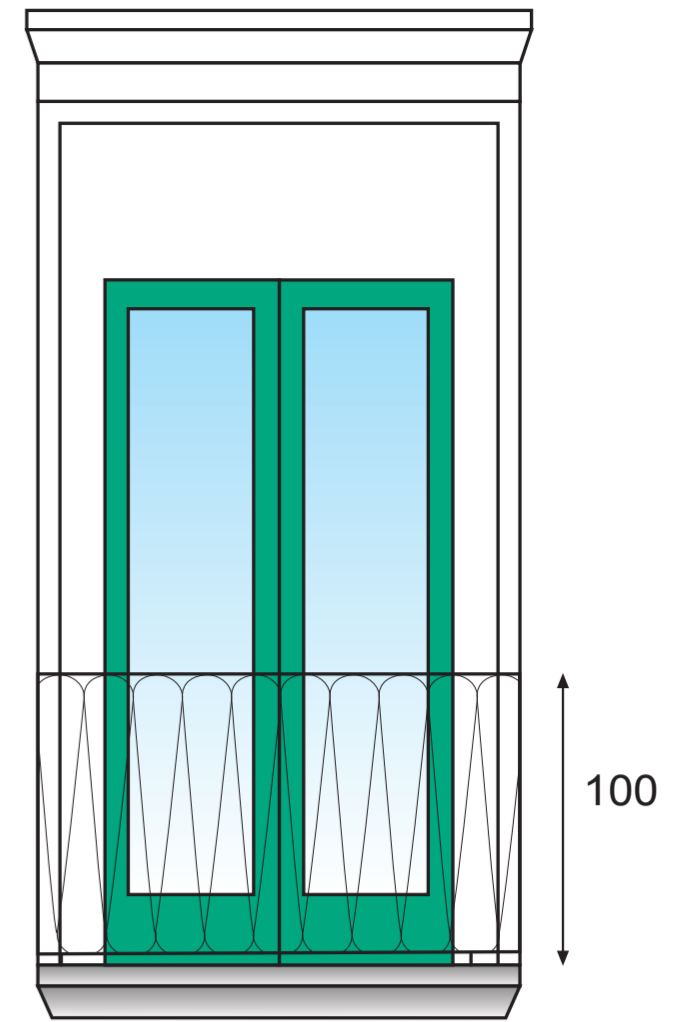
Progetto: Elementi architettonici caratterizzanti

CORNICI

Corniciatura dei balconi
con fascia liscia

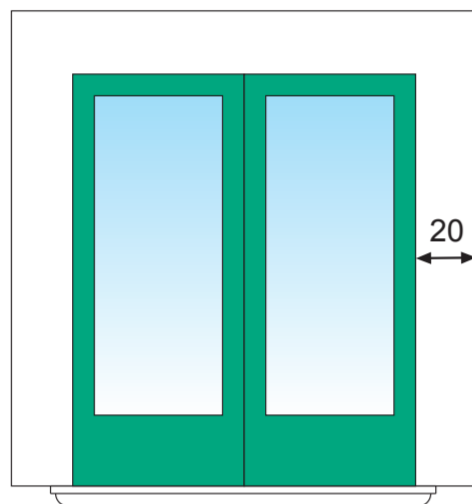


Corniciatura balcone con
fascia modanata

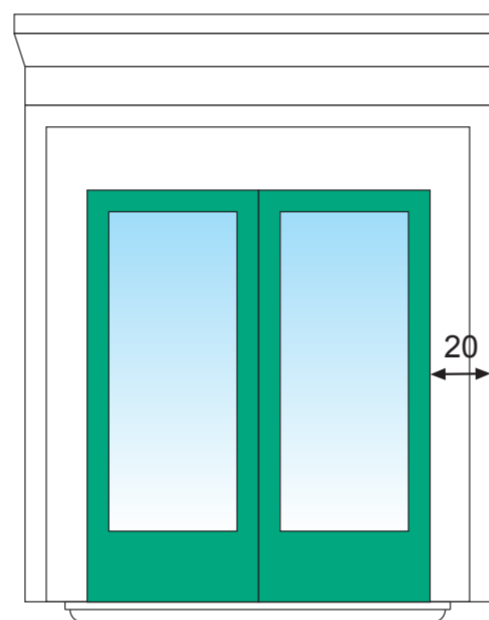


CORNICI FINESTRE

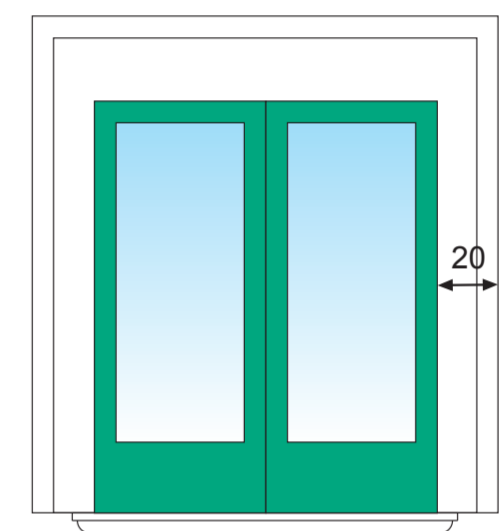
Corniciatura delle finestre con fascia liscia



Corniciatura delle finestre con fascia modanata
tipo A

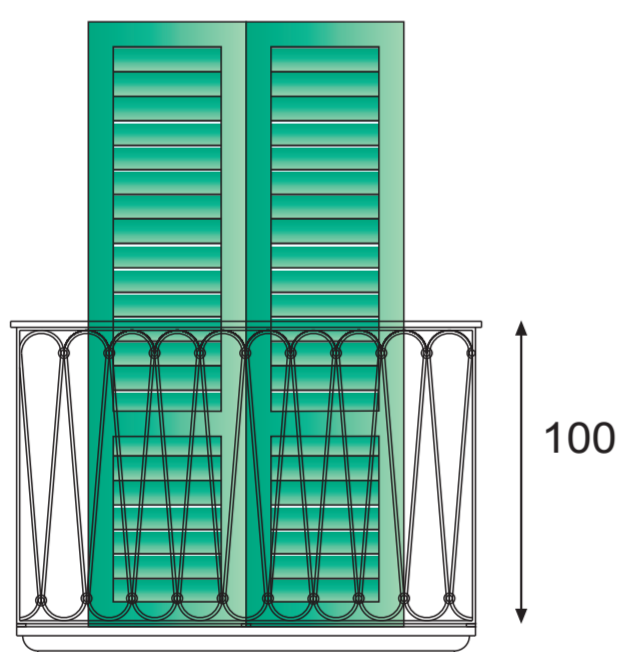


Corniciatura delle finestre con fascia modanata
tipo B

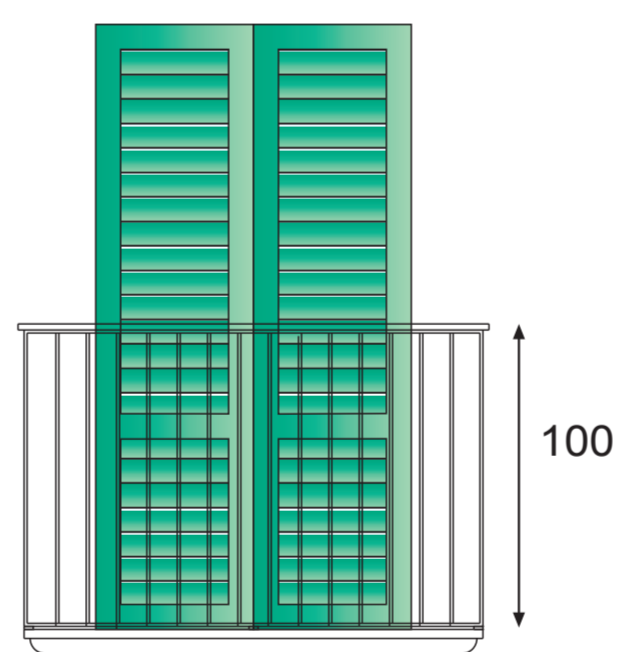


RINGHIERE

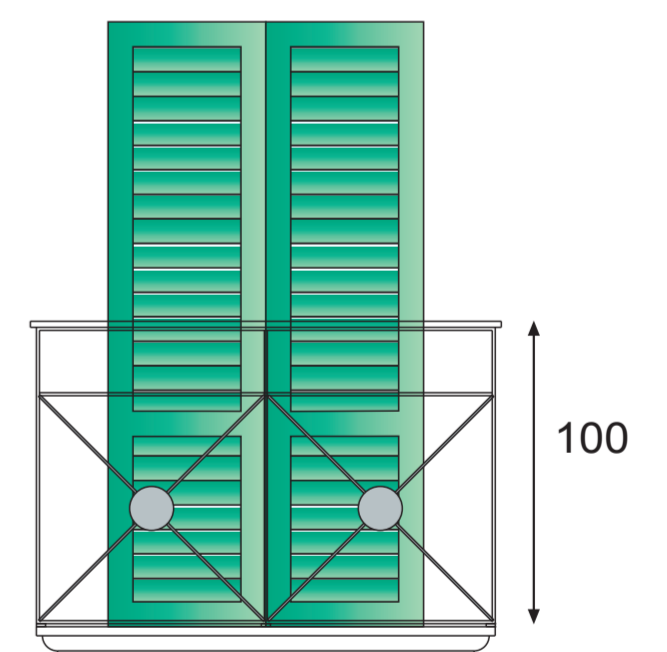
Ringhiera tipo "A"



Ringhiera tipo "B"

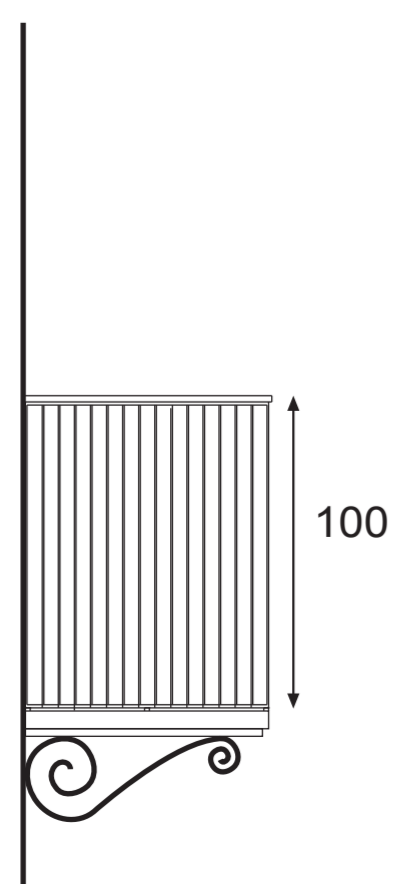


Ringhiera tipo "C"

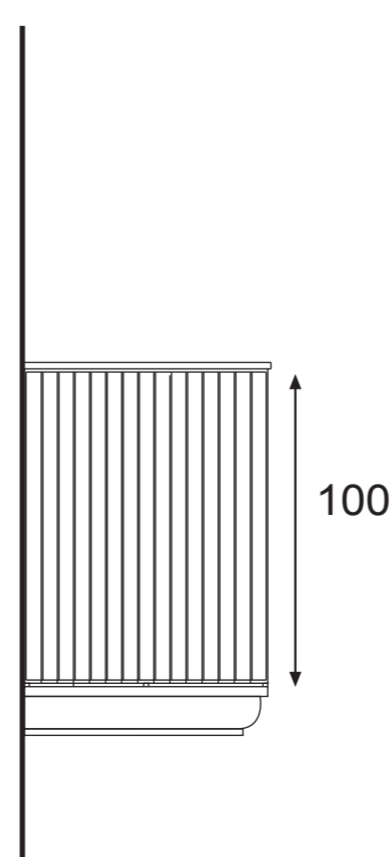


SOGLIE BALCONI

Balcone con soglia in marmo
e mensola in ferro



Balcone con soglia in pietra



Balcone con soglia in cemento

